

saket VEDĀ



saket VEDĀ

TSRERA: P02200004025



SITE ADDRESS: Saket Bhu:Satva,
Gowdavelly, Near Kompally, Hyderabad.

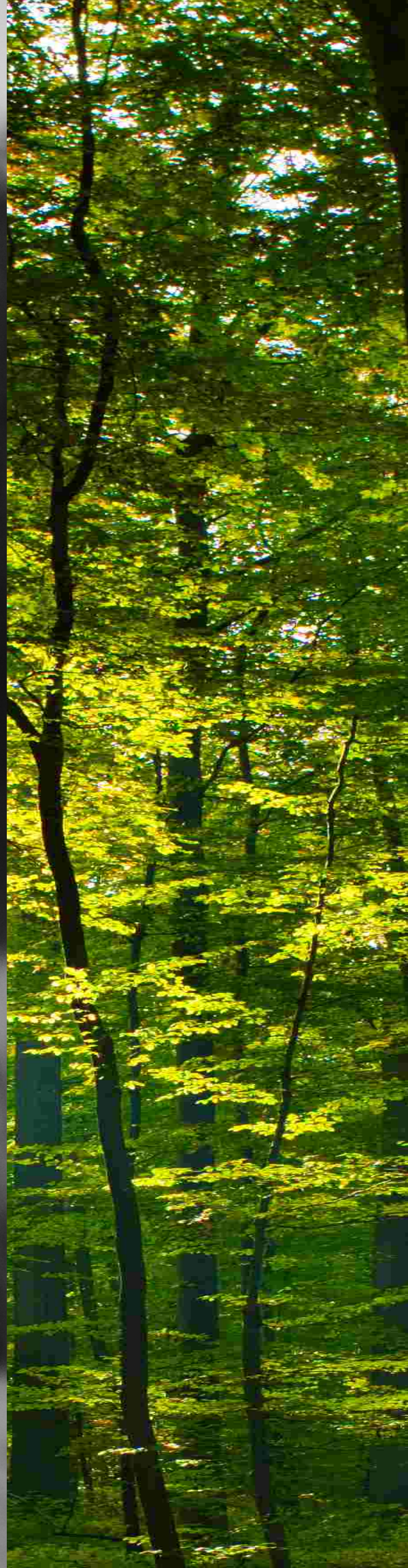
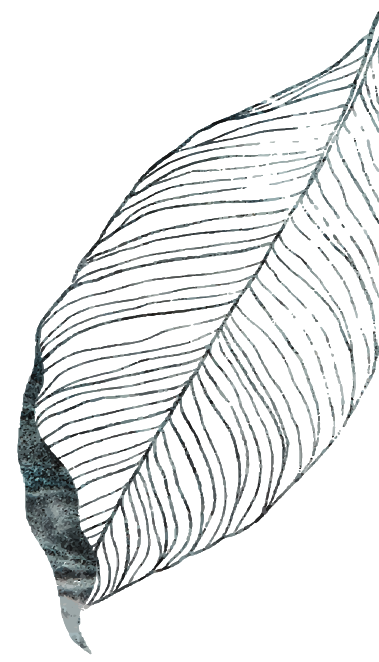
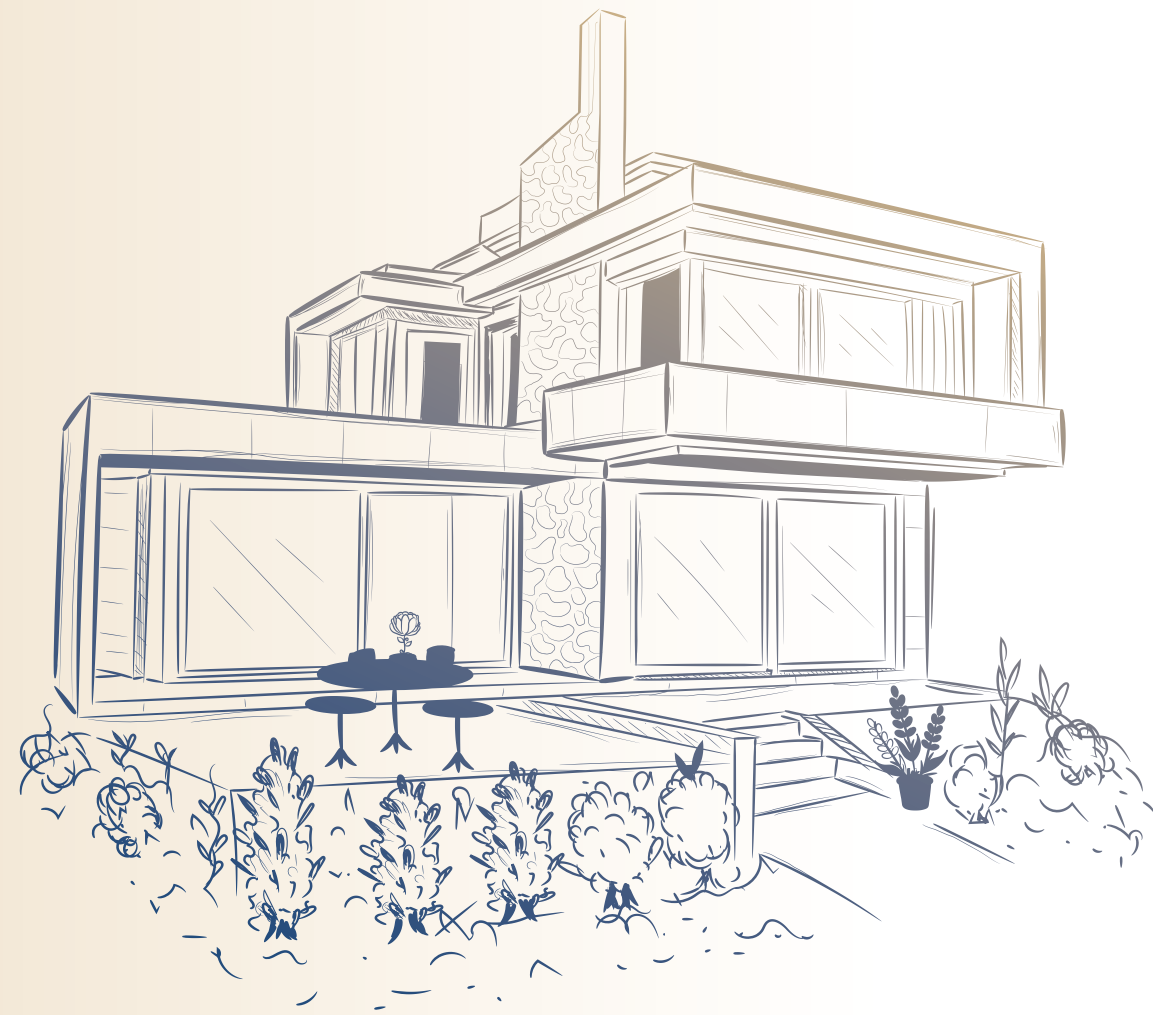
✉ sales@saket.in 🌐 www.saketgroup.com

Member **TREDA** | Member **CREDAI** | PROJECT APPROVED BY **hmda** Growing Global | Indian Green Building Council Member | Home loans available from: **ICICI Bank Home Loans** | **HDFC HOME LOANS** WITH YOU, RIGHT THROUGH

Note: This brochure is only a conceptual presentation of the project and not a legal offering. The promoters reserve the right to alter and make changes in plans, specifications, elevation and any other detail as deemed fit.



Our journey begins with crafting homes, yet it's the echoes of laughter and shared moments that truly make it a masterpiece. Here, customization isn't just a feature; it's a philosophy. Your dreams shape the blueprint, turning every corner into a personalised canvas. In this fusion of design and memories, we create homes that are uniquely yours.



Inviting spaces to
breathe, move, and live
harmoniously with
nature.

Open spaces invite you to breathe in the freshness, transforming each step into a rejuvenating experience. Having the freedom not just to customise interiors but to enjoy the vast outdoors—whether it's a leisurely jog or a tranquil space for exercise—our landscapes are designed to be an extension of your well-being.



Beyond bricks and beams we craft the essence of a lifetime where every corner holds a cherished memory. As your family gathers in the living room our design seamlessly intertwines with the warmth of shared moments.

From cosy movie nights to lively conversations every detail becomes a thread in the rich tapestry of your family's story creating a home that breathes life into your most treasured memories.



Your Home, Your Story.

Beyond bricks and beams, we craft the essence of a lifetime, where every corner holds a cherished memory. As your family gathers in the living room, our design seamlessly intertwines with the warmth of shared moments.

From cosy movie nights to lively conversations, every detail becomes a thread in the rich tapestry of your family's story, creating a home that breathes life into your most treasured memories.

In this living space, the heart of your home, our design philosophy goes beyond aesthetics. It becomes a backdrop for the laughter of your children, the comfort of quiet evenings, and the joy of celebrations. Every nook and cranny is a testament to the unique stories that unfold within, transforming your living room into a sanctuary of lasting connections and enduring memories.



Mindful Construction



SURROUNDED BY A 600-ACRES
FOREST RESERVES



ADJOINING 54 & 15 ACRES
NATURAL LAKES

Heartfelt Creation



PLOT SIZES FROM
200 TO 400 SQ.YDS.



32,000 SQ.FT
CLUBHOUSE

PHASE I

LUXURY VILLAS
200+ FAMILIES
LIVING

PHASE II

LUXURY VILLAS
186 VILLAS
CONSTRUCTION
IN FULL SWING

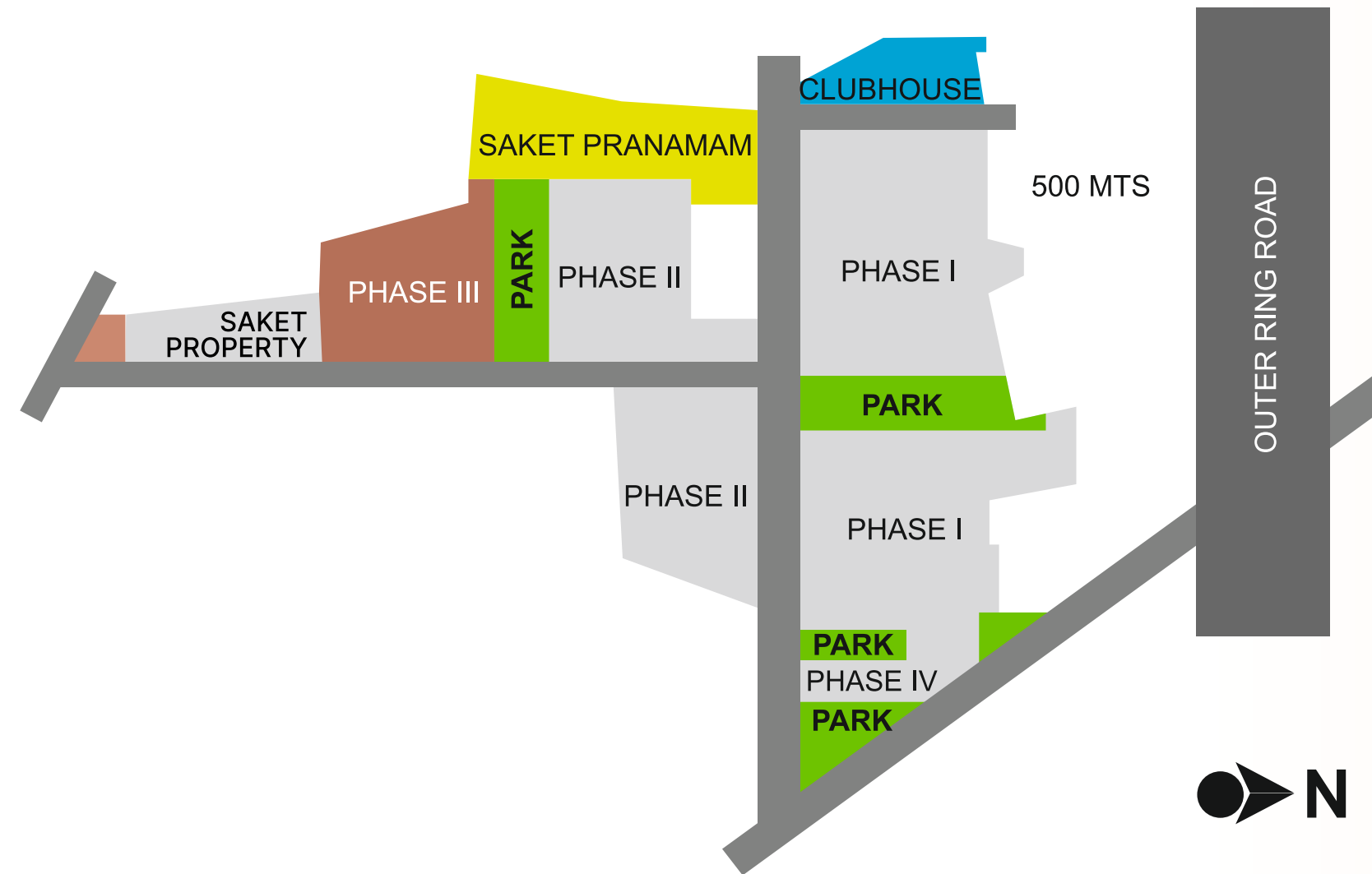
PHASE III

CUSTOMISED
LUXURY VILLAS

PHASE IV

OCCUPIED
VILLAS

75 ACRE MASTER LAYOUT



PHASE III MASTER LAYOUT



LAYOUT PERMIT NO.
22/LO/PLG/HMDA/2021



TSRERA: P02200004025
details of registration
can be sought from
<https://rera.telangana.gov.in>

SPECIFICATIONS



Foundation:
R.C.C Framed structure.



Superstructures:
- 4"/8" thick fly ash-based solid cement blocks or equivalent



Development Features:

- 30'-wide internal road, 60' access road., with tiled footpath
- Street lighting
- Avenue Plantation and Landscaped Gardens
- CCTV
- Intercom
- Sewerage Treatment Plant
- Children's Play Area
- Standby Power Supply (Generator) For General Amenities like Water Supply, alternate Street Lights, STP
- Under-ground Electrical Lines. (Power and Lighting)
- Under-ground Cable System for Cable T.V and Internet / Broad Band Services provided by the third party

- Plastering: 4"/8" thick fly ash based solid cement blocks or equivalent
- Paintings: Coats of Apex weather coat over Texture
- Utility: Provision for washing machine and dishwasher point.
- Floorings & Dado
- Vitrified tiles:
 - G.F -living room, dining, kitchen & F.F lounge 800mx1600mm floor tiles 600mm x 600mm floor tile - G.F bedroom
 - The Wooden flooring of reputed make:
 - First & Second-floor bedrooms
 - Matt finished ceramic tiles 600mmX 600mm for sitting out
 - Matt finished ceramic flooring for toilets /Utility.
 - Granite for the internal staircase.
 - Parking tiles for the Porfco area.
 - Kitchen



Doors & Windows:

- Main door: Architrave with Engineered door frame and door shutter
- Internal Doors: Architrave with Engineered door frame and door shutter
- Windows:- UPVC - 3 track windows with Mosquito mesh and standard hardware



Vitrified tiles:

- Granite platform with stainless steel sink with drainboard. Provision for RO unit/ water filter, and electric chimney. Provision for bore and municipal water.
- Toilets
- Vitrified tile
- Wash Basin: Commode of Kohler/ or equivalent.
- CP fixtures: All bathrooms -Concealed single lever diverter for hot and cold with overhead shower. All CP fitting of Kohler/ or equivalent.
- Railings
- SS handrail glass railing for internal Staircase and cutout area First-floor Sitout and second-floor open terrace with Glass railing & SS handrail
- Telecommunication
- Broadband: subject to service provider Intercom connectivity to security.
- Provisions for DTH/Satellite tv/Alternate in bedrooms and hall.



Electrical:

- Concealed copper wiring in PVC pipes
- Power outlets for air conditioning in all bedrooms.
- Power plug for cooking range, chimney, refrigerator micro-oven.
- Plug points for TV, and music systems in all bedrooms and living rooms
- 3 Phase supply for each unit with dual metering.
- Miniature Circuit Breakers (MCB and ELCB) or equivalent.
- All electrical modular switches and sockets will be SIEMENS or equivalent.

Common Amenities:

- 100% backup generator for villas.
- Sewerage treatment plant.
- Water supply with a Pressurised Pneumatic pumping system.
- B.T. Road with the tiled footpath.
- Landscaped park areas and footpaths.



Painting:

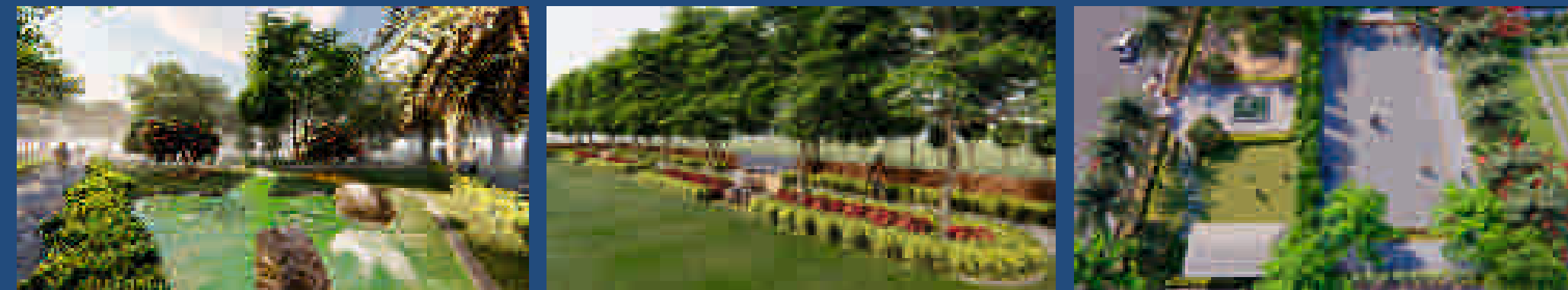
- Coats of Apex weather coat over Texture



Plastering:

- Smooth plaster in two coats

Note: The above specifications may be changed to comply with any Authority regulations or if the Project Architect recommends alternative of equal or better quality.



TSRERA: P02200001965 details of registration can be sought from <https://rera.telangana.gov.in>

LOCATION MAP

(Not to Scale)



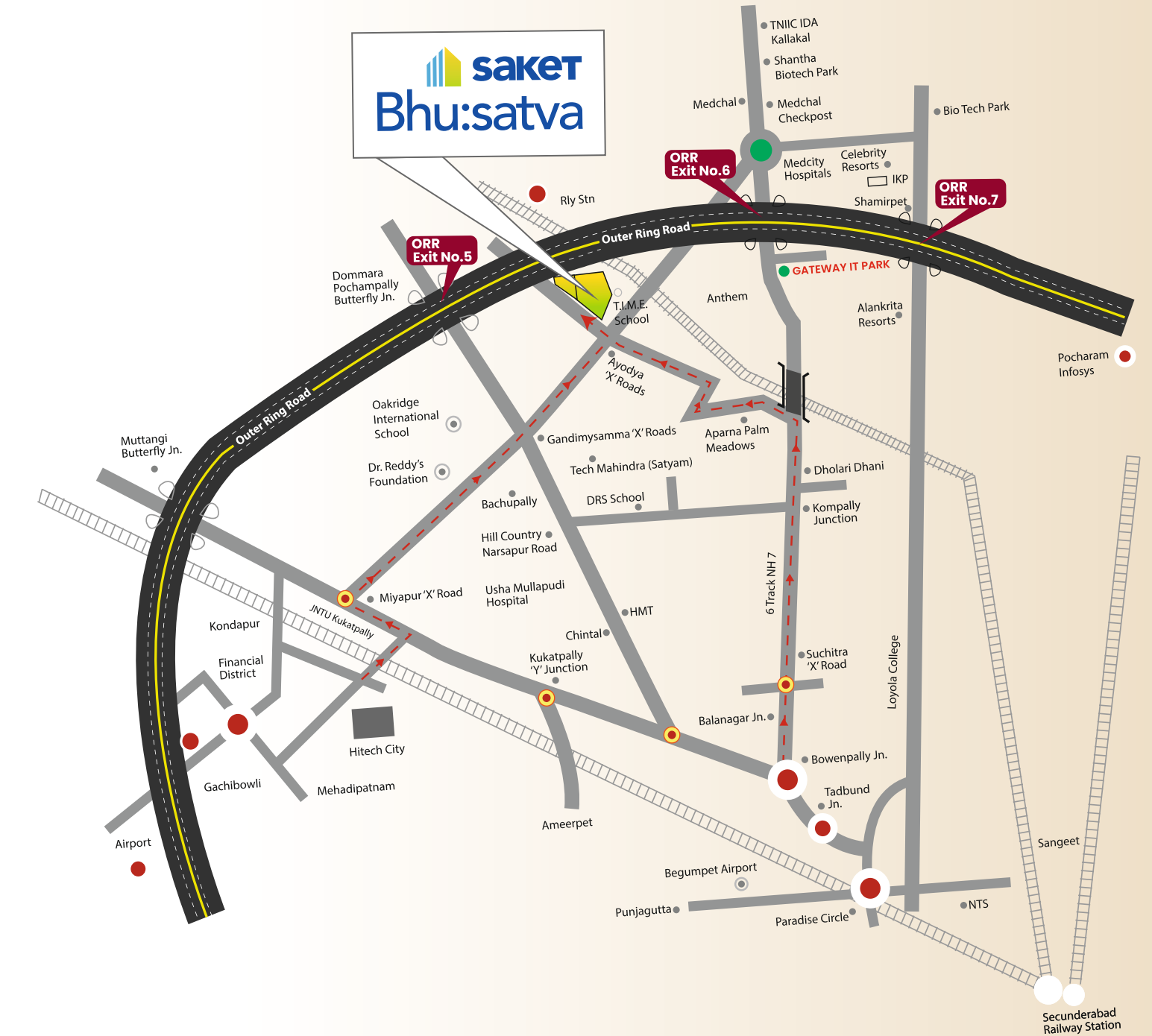
3 KM FROM KANDLAKOYA GATEWAY IT PARK

5 KM FROM KOMPALLY

CLOSE TO ORR EXIT NO. 5 & 6



SCAN FOR LOCATION



901000 93000

30+ AMENITIES

FEATURING A
THOUGHTFULLY-PLANNED
TOWNSHIP FOR YOUR
FAMILY'S ALL
AROUND WELL-BEING



SWIMMING POOL
WITH CHANGING ROOMS



BASKETBALL
COURT



GYMNASIUM



INDOOR
BADMINTON COURT



YOGA /
MEDITATION HALL



SQUASH COURT



INDOOR GAMES



GUEST ROOMS



TODDLER'S PARK



OPEN AIR
AMPHITHEATER

- WELL-DESIGNED CLUBHOUSE.
- CHILDREN PLAY AREA.
- CLAY TENNIS COURT.
- BASKET BALL COURT.
- INDOOR SHUTTLE COURT
- SKATING RING.
- WALKING TRACK.
- BILLIARDS TABLE.
- GUEST ROOMS.
- PROVISION OF LAKE VIEW RESTAURANT AREA.

- CRICKET PRACTICE NET..
- PROVISION FOR SPA /SALOON.
- CRÈCHE FOR CHILDREN.
- BANQUET / MULTIPURPOSE HALL.
- LIBRARY.
- BANK AND ATM.
- YOGA / MEDITATION ROOM.
- OUTDOOR GAMES
- DESIGNER STREET LIGHTS.

